

## Goals

- Redesign and optimize the Alberta parks system for current budget realities, visitation, and expectation of Albertans.
- Ensure that sites retained by Parks Operations Division are aligned with its purpose and mandate. That is, that the recreation, tourism and conservation features of the site are proportional to the resources put into managing them.
  - A sub-goal is to maintain system 'integrity'. That is, assess options for maintaining conservation and recreation framework goal, regardless of who manages. I.e., reduce duplication before rare/unique
- Parks Operations Division: managing with excellence those parks and protected areas of provincial significance (recreation, tourism, and conservation values) with a commitment to a more integrated approach.
- Develop rationalization and evaluation criteria to determine:
  - Which sites are provincially significant, serve an essential function to Albertans and need to be retained by AEP to manage.
    - Which of these sites are the 'crown jewels' and classic provincial parks to be managed by Parks Operation Division.
    - Which sites should be transferred to Lands Division to be managed as protected areas as part of the matrix of conservation-oriented lands in Alberta.
  - Which sites do not meet the threshold of provincial significance, are costly to manage with little return to Crown or value for Albertans, and should be either:
    - Deregulated to become vacant public land
    - Deregulated and divested to a third party (municipality, etc.) to run
    - Kept as-is but entered into a partnership model to run or operate (FOA, partnership, etc.) – assumption: would be held within Parks Operations Division

## Steps

1. Coarse assessment of 'mandate' – Parks Operations Division vs. Lands Division
  - In general, PP and PRA = Parks Operations and WAERHRNA + WPP = Lands Division
  - Willmore – need to test. Could be treated like a WPP, or alternatively, managed within Parks Operations as part of the northern rockies grouping with Kakwa, Rock Lake, Switzer, etc. – increased tourism function, collaboration with BC and NPs, etc.
  - Operating vs. non-operating – up to Lands Division to determine whether sites are operating or not? I.e., WPP – backcountry focus, but they are operating in terms of staging facilities and patrols, etc.
2. Clean up the mess with reclassifications – everything in the right buckets
  - Single conservation management intent (Lands) vs. multiple management intent +recreation
  - PP: 53 + 6 PRAs (Lakeland, Cooking Lake-Blackfoot, Wapiabi, Musreau Lake, Fickle Lake, Evan Thomas)
  - PRAs: 198 + 7NAs
  - Kananaskis: WPPs managed in concert with PP, same with Castle, may be a few in North

3. Assess and weed out the chaff
  - Identify tier 1, 2, 3, 4
  - Identify those for partnership (have something to offer) vs. straight dereg/divest
  - Can also identify duplicate reserves for dereg/divest/partner for Lands Division, particularly in the NAs
  - Criteria 1: sites already slated or identified for deregulation (Dec 2018 work)
  - Criteria 2: PRAs with no multiple values / small size – consider divesting to public land or municipal agency, private contractor, etc.
    - i. Staging PRAs with no overnight
    - ii. Small infrastructure only PRAs – ie, old FRAs with high cost and low revenue
    - iii. Day use only PRAs with redundant rec values
    - iv. High revenue or municipal value PRAs with potential to divest
  - Criteria 3: Natural Areas with redundant conservation values (>5 at 10sqkm with same NHT representation)
    - i. Not considered in Grassland, Parkland where NHTs not met
    - ii. NAs with redundancy of NHT protection and rec opportunities – located predominatnly in central mixedwood boreal where not also protecting significant landforms or SAR
    - iii. Existing active stewardship group – potential low hanging fruit
  - Criteria 4: Provincial Parks with no significant conservation values or redundancy of representation or values, and have high revenue for potential partnership or privatization
4. Retained sites: will Parks Operations Division manage any non-operating sites? Or transfer to lands to manage?
  - Will Lands have a 'recreation' mandate? Can they take all non-operating PRAs?
  - Can they manage the partnerships for low-value sites?

### Project Plan

Week 1 (Sep 30-4) Note: short week

- Test assumptions with ADM
- Develop DM slidedeck
- Begin development of project plan

Week 2 (Oct 7-11)

- Complete project plan
- Present DM slidedeck, test assumptions and validate next steps
- Initiate RFP contract work
- Develop key messaging for directors and key staff about intent of project and asks
- Engage with internal staff on framework and criteria (Heather, Brent, Janelle, Tazim)

Week 3 (Oct 14-18) Note: short week

- Continue to develop framework and criteria and initial excel cut
- Workshop/meeting with PDC to validate thinking and revise approach

- Send out excel spreadsheets for regional work and verification

#### Week 4 (Oct 21-25)

- Continued regional site-specific work
- Development of 'report' for DM
  - o Need: figure out format and content

#### Week 5 (Oct 28-Nov 1)

- Completion of 'report' for DM, and incorporation of regional work
- Assessment of resources required for Phase 2?
- Breakdown of work in next 2 months

#### Beyond?

- Work with PCO on Cabinet time
- Engage other Ministries and broader parks staff audience??
  - o Infrastructure
  - o Lands Division? Policy and Planning
  - o Municipal Affairs
  - o EDTT and Culture
- Financial analysis and Incorporation of financial data
  - o Ie – what are maintenance and management costs per site type?
- Continued refinement of site-specific
  - o Geographic analysis – numbers, regional parity, etc.
  - o Conservation assessment – any impact to target progress?
  - o Other risks, unintended consequences
  - o Capital – assess capital investment costs to 'manage with excellence' – tie in LOS
- Cabinet Report 'straw dog' or whatever format it takes and continued analysis for areas within cabinet documents.
- Identify divest tools needed (ie, nominal sum disposals)

#### Key deliverables

DM slidedeck

Project Plan

RFP for financials

Biweekly update to ED

Weekly update to ADMO

"Divest" framework and criteria

Draft excel of all sites

“Report” for DM (Halloween)

Strategic Coms plan for Phase 2?

Cabinet Report or whatever for January

- cabinet docs unknown. White paper on policy shifts
- analysis from multiple lens: ie, financial, operational, conservation (target %), geographic / regional parity, stakeholder analysis, tools needed

### Q's for Scott

- Help with RFP – Tazim, Nova?
  - Need to start work with internal staff – Brent, Janelle, Tazim, Heather, Brian?
    - o Cara available to help
    - o Heather – Friday while I'm gone
  - What is the recreation 'mandate' of lands division? Ie, will they take non-operating PRAs or PPs to manage?
  - May make sense to spend less (or no time) on analysis for Lands Division sites – could even phase that in so conceptually, public doesn't see massive re-organization AND massive deregulation at once. They get used to the change in regime before sites from both divisions are let go.
  - Name? Rightsizing vs. Divestment project...needs to be short and accurate.
- 
- Can reach out to Mike directly

Criteria: focus on capital renewal, population centres, revenue, visitors

Capital costs for decommissioning

Long term vs. short term goals

RFP – cost/revenue projections – proxy or extrapolation for proxy sites. Gives us some political distance.

Subsidy or grant value. Talk to Naomi, Nova

Q's for Mike: key messages for PDC.

Resourcing – Cara, Travis, Rae? Janelle? Tyler?

How Edmonton-driven is process? Bring in Directors? Ie, we know which the 'good' sites are, but coming up with feasible options for community/partnerships will take their local knowledge.

Can PRAs be held by lands? Or Suggest they go there post-MOLE. Either decommission, run as part of rec program? PLRA, etc. or they manage partnerships.

The legislated classifications currently under the 3 pieces of parks and protected areas legislation can be grouped by management intent into two broad categories, depending on the historical use of an individual site and the contribution to the program goals of Alberta Parks: people friendly communities and recreational opportunities; healthy ecosystems and environment; sustainable prosperity supported by our land and natural resources (haven't quite got this figured out yet – but mirrors Completing the Puzzles Natural Heritage Sites and Recreation Facility Sites)...

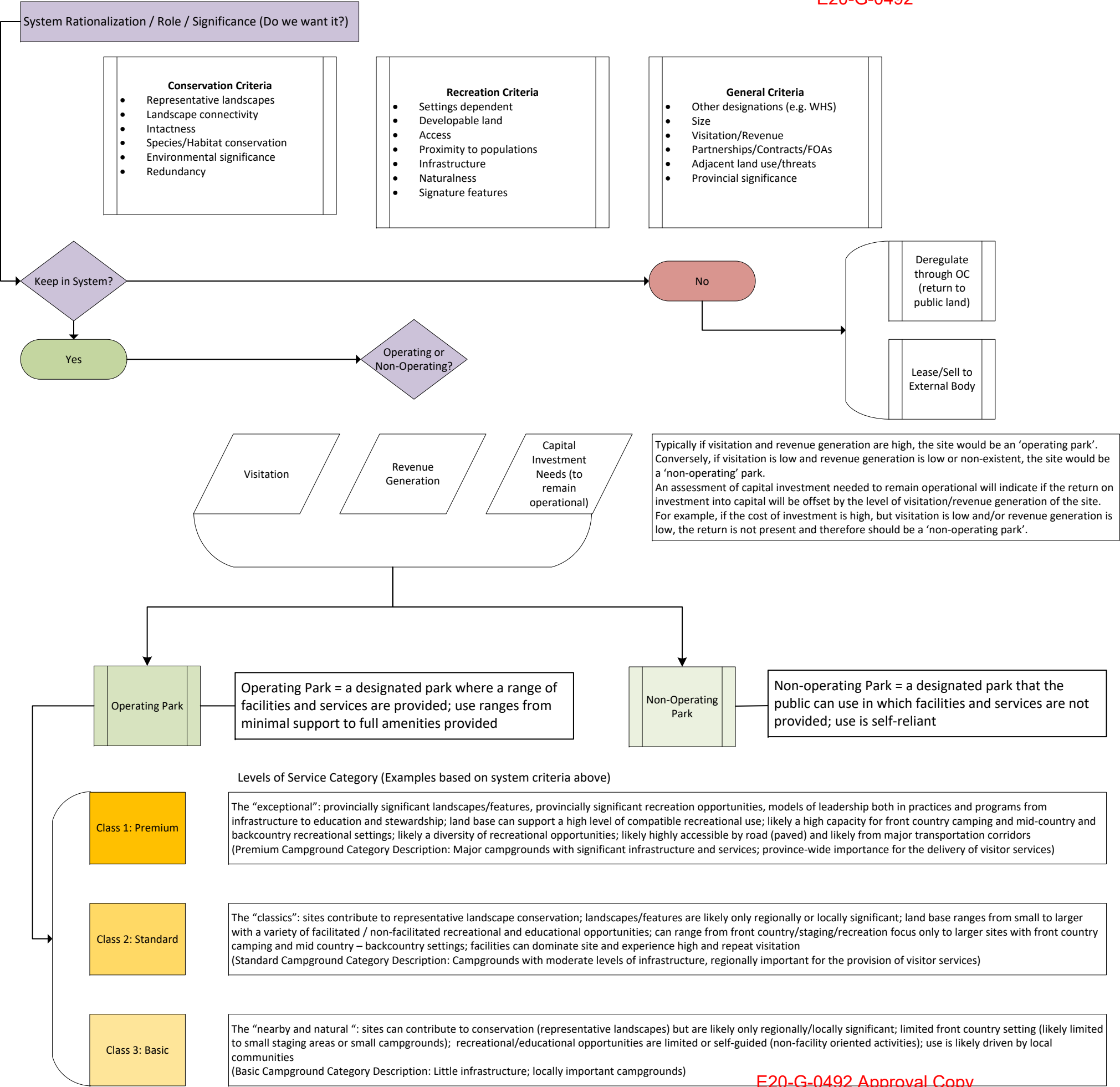
1. **Conservation sites** (essentially these are the *non-operating sites* of Tracy's chart... but includes some of the "basic sites" – essentially the natural and nearby sites that are true NAs that aren't destined to be reclassified.) – SO NOT Parks Operations Division.
  - **Strict Conservation** - primarily healthy ecosystems and environment. These sites play a significant role in Alberta in protecting and maintaining significant, special, rare or unique natural landscapes, features or species at risk
    - Wilderness Areas (all 3)
    - Ecological Reserves (12) + Natural Areas (identified as potential ER (or PP) (see detailed summary)
    - Provincial Park (1) (Greene Valley) identified for reclass as ER after boundary amendment and remainder to be reclassified as PRA)
  - **Strict Grassland Conservation** – primarily healthy grassland ecosystems and environment managed via long term grazing leases
    - Heritage Rangelands (all 2)
    - Heritage Rangelands Natural Areas (6)
    - Natural Areas focused on Grassland Conservation managed via long term lease (3)
    - Ecological Reserves focused Grassland Conservation managed via long term lease (3)
  - **Wilderness Conservation:** primarily healthy ecosystems and environment (may have secondary (may have secondary objectives for nature based or wilderness recreation – non-infrastructure based).
    - Wildland Provincial Parks (except those that are not sufficiently remote – i.e. Peace River, Otter Orloff)
    - Willmore Wilderness Park (1)
2. Nature-based Recreation Facility Sites – "Operating Parks" (Parks Operations Division)
  - These sites may either be dedicated to nature-based recreation, or have conservation of nature as a primary objective along with the provision of nature-based recreation opportunities
  - These "Operating Parks" Include:
    - 57 remaining PPs not identified for reclass or deregulation
    - 138 PRAs not identified for reclass or deregulation
    - 18 Facility dominated PPs identified for reclass as PRAs (these should be evaluated for divestiture)
    - 13 PRAs with significant conservation values in addition to their significant recreation values identified for reclassification as PPs (reported as PAs)
    - 19 PRAs that should be consolidated into adjacent PPs or consolidated with adjacent sites and reclassified collectively as PPs
    - 11 NAs intended to be reclassified as PRAs
    - 27 NAs intended to be reclassified as stand alone or consolidated with adjacent PPs

- 11 NAs intended to be reclassified as either ER or PP (depending on outcome)
- ER (1) intended for reclass as PP (Kootenay Plains)
- 6 WPPs that are not sufficiently remote or have facilities or access that make them more appropriately managed as provincial parks
- They may be divided/evaluated against the 3 tiers Tracy loosely identified based on Heather's Experience framework
  - **Signature Sites** (Tracy's Class 1 or "premium" or signature sites)
    - Urban Signature – Day Use
    - Signature Destinations – Overnight. These parks have at least 3 settings: front country, midcountry, backcountry
  - **Classics or Model Parks** (Class 2 – s/b PPs only – sites where there are still multiple settings (or at least front country/midcountry (vs. the signature sites that MAY also have backcountry)
    - Classics / Standard -
    - Day use? E.g. Antelope Hill, Dry Island Buffalo Jump PPs – these could fit here or in signature sites as well.
  - **BASIC or Recreation Facility Sites** (class 3) (amalgamation of family/social, staging) (these should be PRAs and PPs (to be reclassified) with front country settings only) (or Tracy's BASIC) – but outside the basic PRAs, these are really NON-OPERATING sites according to Tracy's defn.)
    - PPs that should be PRAs (these would be ideal divestitures)
    - PRAs – overnight camping
    - PRAs – staging / day use only – but explore if these could go to PLUZ manager types as PLRAs...or be divested if they are municipal in nature
    - COULD include the natural and nearby sites from the NAs that SHOULD be NAs... where the NAs that should be ERs, PPs or PRAs (see summary lists) have been reclassified appropriately

## Rightsizing Alberta Parks (Phase 1) Project Plan – November 2019

Project Component / Milestone	Task	Schedule											RACI (Internal)				Status
		Oct 1-4	Oct 7-11	Oct 15-18	Oct 21-25	Oct 28 – Nov 1	Nov 4-8	Nov 11-15	Nov 18-22	Nov 25-29	Dec 2019	Jan 2020	A	R	C	I	
Project planning and Briefings	Develop DM Slidedeck												Tracy D	Robin S	ED / ADM	DM	Complete
	Develop Project Charter and Project Plan; endorsement by Project Sponsor												Tracy D	Robin S	ED / ADM	PDC	Complete
	Project Brief at PDC – Oct 15. Confirm project team membership												Tracy D	Robin S	PDC		Complete
	Kickoff meeting w/ Project Team/SMEs (subsequent weekly project team meetings and semi-weekly core team meetings)													Robin S	SMEs		
	Draft Minister BN. Materials submitted through ARTS.												Tracy D	Cara G	Robin S		
	ADMC discussion – Oct 23. Materials due Oct 17 through ARTS.												Tracy D	Robin S	ED / ADM		
	DM brief (attempting to find earlier date)												Tracy D	Robin S	ED / ADM		
Develop rationalization framework and evaluation criteria	Collect and review key information (LOS, capital, etc.)													Robin S			In progress
	Draft and submit FIN 35 for 3 <sup>rd</sup> party financial review for ED/ADM review												Tracy D	Mary C	Robin S, Neenu W		
	Develop draft rationalization framework and revaluation criteria with project team												Tracy D	Robin S	SMEs	ED, ADM	
	Meet with legal to assess implications and key risks												Tracy D	Robin S			
	Validate work with PDC and key regional contacts												Tracy D	Robin S	PDC Regions	ED	
	FIN 35 to Contract Review Committee, DM and DMC												Tracy D	Robin S			
	Cross-ministry engagement (LUS, Infr, MA, EDTT, Culture, Energy, P&P, Lands Division, PCO)												Tracy D	Robin S		ED	
	Draft RFP with CPU and post												Tracy D	Mary C	Robin S		
	Score bids and choose contractor												Tracy D	Robin S	ED		
Analysis and development of recommendations	Build spreadsheet for data input/analysis												Robin S	Mary C			
	Assess duty to consult with Indigenous peoples												Tracy D	Cara G	Elizabeth D		
	Individual site analysis with draft recommendations (analysis against framework and criteria)												Robin S	Proj. team	Tracy D	ED	
	Regional meetings and/or conference calls to validate work												Tracy D	Robin S	Directors		
	Identification/inventory of new tools needed for implementation of phase 2												Tracy D	Robin S	SMEs		
	TBD - incorporate external financial analysis												Tracy D	Robin S	SMEs		
	Draft Cabinet Report and required appendices (e.g., strategic comms plan)												Tracy D	Robin S	SMEs		

Develop Cabinet Report (or alternative format, TBD)	ED/ADM review												Tracy D	Robin S			
	Final Cabinet Report to DM for Review												Tracy D	Robin S	PCO		
	To Cabinet: Phase 1 Completion												Tracy D	Robin S	PCO		



**Levels of Service:**

In the development and operation of its operating parks, Alberta Parks is committed to:

- Providing a range of experiences in a natural environment;
- Minimizing disturbance to the natural environment whenever possible;
- Minimizing risk to visitors;
- Ensuring visitors know the type of experience offered at the site of their choice;
- The effective and efficient use of its financial resources; and
- The consideration of the limitations of its visitors (as per the Inclusion Strategy).

**Operating Parks:**

- Legislation and regulation apply and dictate permitted/non-permitted uses
- Class of operating park for levels of service is differentiated by level of visitation (popularity) and facilities and services offered.

Class 1: Premium

At a minimum Class 1: Premium park will offer:

- Campgrounds that offer electrical hook-ups. Water and sewer hook-ups may also be available.
- At least one shower/comfort station that includes showers, multiple washrooms with flush toilets, and possibly laundry (pay for use) facilities.
- Potable water system or source.
- Consistent and frequent guided/facilitated educational programming (e.g. amphitheatre programming, guided hikes, etc.)
- Cleaning and maintenance schedules that allow for the continual enjoyment of the park and facilities by visitors (e.g. no overflowing waste containers, cleanliness of showers/washrooms, frequent grass/public space maintenance).

Class 2: Standard

At a minimum Class 2: Standard park will offer:

- At least one campground that offer electrical hook-ups.
- At least one washroom facility with flush toilets
- Minimal, infrequent (1-2 times per season) guided/facilitated educational programming (e.g. satellite offering from nearby Premium park)
- Cleaning and maintenance schedules that allow for the continual enjoyment of the park and facilities by visitors (e.g. no overflowing waste containers, cleanliness of washrooms, adequate grass/public space maintenance). (Likely to be less frequent than in a premium park but more than a basic park)

Class 3: Basic

At a minimum Class 3: Basic parks will offer:

- Maintained road access
- Parking spots for day use access
- Clearly identified camping areas/sites
- No education programming

**Non-Operating Parks:**

- Legislation and regulations still apply and dictate permitted/non-permitted uses
- No fee for use (where fees may be implemented in operating parks)
- All use is self-reliant/self-guided
- No capital investment is made – No facilities, no potable water, no maintenance
- No staff allocations (beyond enforcement) are made
- Enforcement schedules are dictated on an as needed basis (e.g. known issue sites/more accessible sites may have more regular enforcement patrols, more remote/less issue sites would have less frequent patrols)

## Signature Destinations

Summary	Sure Sites	Under consideration
Total # Sites	8	11
Total Area (ha)	1,659.62	52,715.48
Proportion of AB Parks System	0.04%	1.20%
Classifications implicated	PP(6), PRA (2)	ER (1), PP(8), PRA(2)
IUCN PA Categories	II	Ia, II, could be reported, not reported

## Sure Sites

Pasites ID	Name	Class	Status	IUCN PA Category	Parks Division Region	Primary Designation Objective
1158	Castle	PP	OC	II	S	conservation + recreation - facility based
1014	Cypress Hills	PP	OC	II	S	conservation + recreation - facility based
1016	Dinosaur	PP	OC	II	S	conservation + recreation - facility based
1027	Lakeland	PP	OC	II	NE	conservation + recreation - facility based
10690	Lakeland	PRA	OC	II	NE	conservation + recreation - facility based
10684	Jackson Lake Trail Staging	PRA	OC	not reported	NE	recreation - facility based
1041	Peter Lougheed	PP	OC	II	KC	conservation + recreation - facility based
1065	Writing-on-Stone	PP	OC	II	S	conservation + recreation - facility based

## In Consideration – tbd

Pasites ID	Name	Class	Status	IUCN Protected Area Category	Parks Division Region	Primary Designation Objective
------------	------	-------	--------	------------------------------	-----------------------	-------------------------------

77	Kootenay Plains	ER	OC	Ia	Central	conservation + recreation - facility based
10065	Kootenay Plains	PRA	OC	not reported	Central	recreation - facility based
1028	Lesser Slave Lake	PP	OC	II	NW	conservation + recreation - facility based
1112	Spray Valley (PLPP)	PP	OC	II	KC	conservation + recreation - facility based
10195	Evan-Thomas (PLPP)	PRA	OC	could be reported	KC	conservation + recreation - facility based
1005	Bow Valley (PLPP)	PP	OC	II	KC	conservation + recreation - facility based
10180	Bow Valley	PRA	OC	not reported	KC	recreation - facility based
1047	Saskatoon Island	PP	OC	II	NW	conservation + recreation - facility based
1048	Sir Winston Churchill	PP	OC	II	NE	conservation + recreation - facility based
1058	Whitney Lakes	PP	OC	II	NE	conservation + recreation - facility based
1060	William A. Switzer	PP	OC	II	Central	conservation + recreation - facility based

## Classics

Summary	Sure Sites	Under consideration
Total # Sites	70	5
Total Area (ha)	97,997.92	1,660.24
Proportion of AB Parks System	2.23%	0.04%
Classifications implicated	NA(8), PP(39), PRA(23)	NA (3), PP(2)
IUCN PA Categories	II, III, could be reported, not reported, n/a	II, could be reported, no reported

## Sure Sites

Pasites ID	Name	Class	Status	IUCN PA Category	Parks Division Region	Primary Designation Objective
1157	Antelope Hill	PP	OC	II	Central	conservation + recreation - facility based

1002	Beauvais Lake	PP	OC	II	S	conservation + recreation - facility based
1003	Big Hill Springs	PP	OC	III	KC	conservation + recreation - facility based
1004	Big Knife	PP	OC	II	Central	conservation + recreation - facility based
1006	Bragg Creek (Elbow Valley PP)	PP	OC	could be reported	KC	conservation + recreation - facility based
10186	<i>Cobble Flats (Elbow Valley PP)</i>	PRA	OC	<i>not reported</i>	KC	<i>recreation - facility based</i>
10191	<i>Elbow Falls (Elbow Valley PP)</i>	PRA	OC	<i>not reported</i>	KC	<i>recreation - facility based</i>
10192	<i>Elbow River (Elbow Valley PP)</i>	PRA	OC	<i>not reported</i>	KC	<i>recreation - facility based</i>
10193	<i>Elbow River Launch (Elbow Valley PP)</i>	PRA	OC	<i>not reported</i>	KC	<i>recreation - facility based</i>
10202	<i>Gooseberry (Elbow Valley PP)</i>	PRA	OC	<i>not reported</i>	KC	<i>recreation - facility based</i>
10222	<i>Little Elbow (Elbow Valley PP)</i>	PRA	OC	<i>not reported</i>	KC	<i>recreation - facility based</i>
10263	<i>West Bragg Creek (Elbow Valley PP)</i>	PRA	OC	<i>not reported</i>	KC	<i>recreation - facility based</i>
1007	Brown-Lowery	PP	OC	II	KC	conservation + recreation - facility based
10644	Calhoun Bay	PRA	OC	could be reported	Central	conservation + recreation - facility based
289	<i>Buck Lake</i>	NA	OC	<i>II</i>	<i>Central</i>	<i>conservation + recreation - non-facility based</i>
1008	Calling Lake	PP	OC	II	NE	conservation + recreation - facility based
1009	Carson-Pegasus	PP	OC	II	Central	conservation + recreation - facility based
1010	Chain Lakes	PP	OC	II	S	conservation + recreation - facility based
10035	Chinook	PRA	OC	not reported	S	recreation - facility based
1011	Cold Lake	PP	OC	II	NE	conservation + recreation - facility based
10662	<i>English Bay</i>	PRA	OC	<i>not reported</i>	NE	<i>recreation - facility based</i>
10670	<i>French Bay</i>	PRA	OC	<i>not reported</i>	NE	<i>recreation - facility based</i>
10651	Cooking Lake-Blackfoot	PRA	OC	II	Central	conservation + recreation - facility based
10038	Crescent Falls	PRA	OC	could be reported	Central	conservation + recreation - facility based

1012	Crimson Lake	PP	OC	II	Central	conservation + recreation - facility based
1013	Cross Lake	PP	OC	II	NE	conservation + recreation - facility based
1090	Crow Lake	PP	OC	II	NE	conservation + recreation - facility based
1015	Dillberry Lake	PP	OC	II	Central	conservation + recreation - facility based
1018	Dry Island Buffalo Jump	PP	OC	II	Central	conservation + recreation - facility based
1017	Dunvegan	PP	OC	II	NW	conservation + recreation - facility based
1128	Eagle Point	PP	OC	II	Central	conservation + recreation - facility based
1129	<i>Blue Rapids</i>	<i>PRA</i>	<i>OC</i>	<i>n/a</i>	<i>Central</i>	<i>recreation</i>
10051	Fickle Lake	PRA	OC	II	Central	conservation + recreation - facility based
10052	Fish Lake	PRA	OC	could be reported	Central	conservation + recreation - facility based
10056	<i>Goldeye Lake</i>	<i>PRA</i>	<i>OC</i>	<i>n/a</i>	<i>Central</i>	<i>recreation</i>
1124	Glenbow Ranch	PP	OC	II	KC	conservation + recreation - facility based
1022	Gregoire Lake	PP	OC	II	NE	conservation + recreation - facility based
1024	Hilliard's Bay	PP	OC	II	NW	conservation + recreation - facility based
492	<i>Police Point</i>	<i>NA</i>	<i>OC</i>	<i>II</i>	<i>NW</i>	<i>conservation + recreation - non-facility based</i>
1026	Kinbrook Island	PP	OC	II	S	recreation
7	Kleskun Hill	NA	OC	III	NW	conservation + recreation - facility based
1119	Lois Hole Centennial	PP	OC	II	Central	conservation + recreation - facility based
1031	Long Lake	PP	OC	II	NE	conservation + recreation - facility based
502	<i>White Earth Valley</i>	<i>NA</i>	<i>OC</i>	<i>II</i>	<i>NE</i>	<i>conservation + recreation - non-facility based</i>
1033	Midland	PP	OC	II	Central	conservation + recreation - facility based
1034	Miquelon Lake	PP	OC	II	Central	conservation + recreation - facility based
1035	Moonshine Lake	PP	OC	II	NW	conservation + recreation - facility based
1036	Moose Lake	PP	OC	II	NE	conservation + recreation - facility based

378	Mount Butte	NA	OC	II	Central	conservation + recreation - non-facility based
49	<i>Battle Lake</i>	NA	OC	II	Central	<i>conservation + recreation - non-facility based</i>
10079	Musreau Lake	PRA	OC	II	NW	conservation + recreation - facility based
1037	Notikewin	PP	OC	II	NW	conservation + recreation - facility based
1109	Obed Lake	PP	OC	II	Central	conservation + recreation - facility based
1120	Pierre Grey's Lakes	PP	OC	II	Central	conservation + recreation - facility based
1043	Police Outpost	PP	OC	II	S	conservation + recreation - facility based
499	<i>Outpost Wetlands</i>	NA	OC	II	S	<i>conservation + recreation - non-facility based</i>
1121	Ram Falls	PP	OC	II	Central	conservation + recreation - facility based
1122	Rock Lake	PP	OC	II	Central	conservation + recreation - facility based
1160	Saskatoon Mountain	PRA	OC	could be reported	NW	recreation (previously conservation + recreation - non-facility based)
1118	Sheep River	PP	OC	II	KC	conservation + recreation - facility based
10268	Sulphur Gates	PRA	OC	II	Central	conservation + recreation - facility based
1080	Sundance	PP	OC	II	Central	conservation + recreation - facility based
1123	Two Lakes	PP	OC	II	NW	conservation + recreation - facility based
1056	Vermilion	PP	OC	II	Central	conservation + recreation - facility based
10269	Wapiabi	PRA	OC	II	Central	conservation + recreation - facility based
10021	<i>Blackstone</i>	PRA	OC	<i>not reported</i>	Central	<i>recreation - facility based</i>
1063	Winagami Lake	PP	OC	II	NW	conservation + recreation - facility based
10677	<i>Heart River Dam</i>	PRA	OC	<i>not reported</i>	NW	<i>recreation - facility based</i>
1067	Young's Point	PP	OC	II	NW	conservation + recreation - facility based
218	<i>Sturgeon Lake</i>	NA	OC	II	NW	<i>conservation + recreation - non-facility based</i>

## Classics – Under Consideration

ID	Name	Class	Status	IUCN PA Category	Parks Division Region	Primary Designation Objective
87	Beaverhill ( <i>Beaverhill Lake HRNA boundary amendment</i> )	NA	OC	II	Central	conservation + recreation - non-facility based
213	Halfmoon Lake	NA	OC	II	NE	conservation + recreation - non-facility based
1064	Woolford	PP	OC	could be reported	S	conservation + recreation - facility based
299	<i>Mill Island (Crimson Lake)</i>	NA	OC	II	Central	<i>conservation + recreation - non-facility based</i>
1078	Canmore Nordic Centre	PP	OC	not reported	KC	specialized recreation - facility based (recreation management overrides conservation value)

# Rightsizing Alberta Parks

CONFIDENTIAL – Advice to Minister  
December 18, 2019

# Context – Crown Lands Transformation

---

- There are many moving parts to the GOA vision for transformation of GOA's approach to managing crown lands:
  - Regional Land Use Planning
  - AEP Re-organization
  - Modernizing our Environmental Legislation
  - Right Sizing Alberta's Parks

# Purpose of RSAP Project

---

- Redesign and optimize how Alberta's parks fit within a broader system.
  - Link to broad government and Ministry goals: financial sustainability, engage in partnerships, enable economic opportunities, reduce stakeholder irritants.
- We're going to evaluate all of our sites to determine which ones fit and should be kept vs. which ones may not fit and could be shed.

# Project Components & Timeline

---

- Phase 1 – Identify sites to keep/share/divest
  - Development of framework and criteria, recommended decision for each site (Nov)
  - AEP engagement (Nov - Dec)
  - GOA-wide engagement (Jan) (\*post MDM)
  - Development of Cabinet Report or equivalent (Dec-Feb)
- Phase 2 – Share/divest sites
  - Implementation will take time (5+ years)
  - Consultation, deregulation, land transfers, negotiations with municipalities, etc.

# Assumptions

---

1. Parks & protected areas are part of the future of crown lands.
2. A cohesive and unified system for Alberta's provincial parks is of value.
3. Regional parity is desirable.
4. Public and Stakeholder consultation in advance of the policy decision by Cabinet will not occur.
5. We will comply with duty to consult with Indigenous peoples. (Very live question)

# Risks

---

1. RSAP changes don't make sense or align with broader system outcomes.
2. Stakeholder concern about loss of / changes to sites and perceived loss of conservation focus.
3. Uncertainty of political support at local level.

## Risk 4 – Lack of detailed financial data

---

- Insufficient data to determine budgetary impacts of recommendations
  - Work initiated to develop a financial model to assess cost/revenue at the site level
- Future Considerations:
  - Some reduction in operating/capital costs
  - Potential loss of some revenue
  - Over time, compounding savings resulting from operational efficiencies

## Risk 5 – Decisions re: Budget 2020

---

- Budget 2020 will necessitate “management decisions” to realize operational savings (likely including closures).
- Ideally this would be aligned with recommendations in RSAP but may not be.
- Impact is that AEP is making decisions and taking actions due to Budget 2020 (to meet targets) before we even get to Cabinet.

# Draft Analysis - Summary Table

Category		# of Sites	Total Area
Parks	Tier 1: Signature Destinations	22	444,952 ha
	Tier 2: Classic Provincial Parks	89	621,400 ha
	Tier 3: Regional Parks	35	10,873 ha
Lands	Strict Conservation	42	222,457 ha
	Natural and Nearby	96	15,550 ha
	Wilderness	21	3,058,138 ha
Divest / Deregulate	Divest	47	8,087 ha
	Deregulate and retain/manage facilities	95	3,917 ha
	Deregulate and close (vacant public land)	27	557 ha

# Remove from System: **Divest**

---

- Remove OC and transfer ownership of lands to 3<sup>rd</sup> party for management as park/recreation resource.
- Recommended for sites that have no significant conservation value, but provide important local/regional recreation opportunities.
- Our experience suggests divestment comes with a price tag.(i.e. capital grant / operating subsidy).

# Remove from System: Deregulate

---

- Remove OC: facilities can be removed, or retained and managed by Public Lands.
- Evaluation criteria:
  - Staging onto adjacent public lands
  - Low or no conservation value
  - Limited recreational value
  - Low visitation/occupancy
  - Minimal cost recovery
  - No opportunity for growth

# Next Steps

---

- Briefing for Minister's staff and CPE (Jan)
- Additional briefing for Minister (Jan)
- Complete analysis and site recommendations (Jan)
- AEP and cross-government engagement (Jan)
- Draft decision document (Feb)
- Cabinet (Mar)

# To discuss with Minister

---

- Does any of this resonate with Minister? Are we on the right track?
- Does Minister have thoughts on how and when we engage Government MLAs?
- Does Minister agree with consultation recommendations?
- Need to start cross-ministry engagement but concerned about information flow and leakage. Will mitigate with limited sharing. Are we cleared to do so?

END



# RSAP Evaluation Framework



# RSAP Evaluation Framework

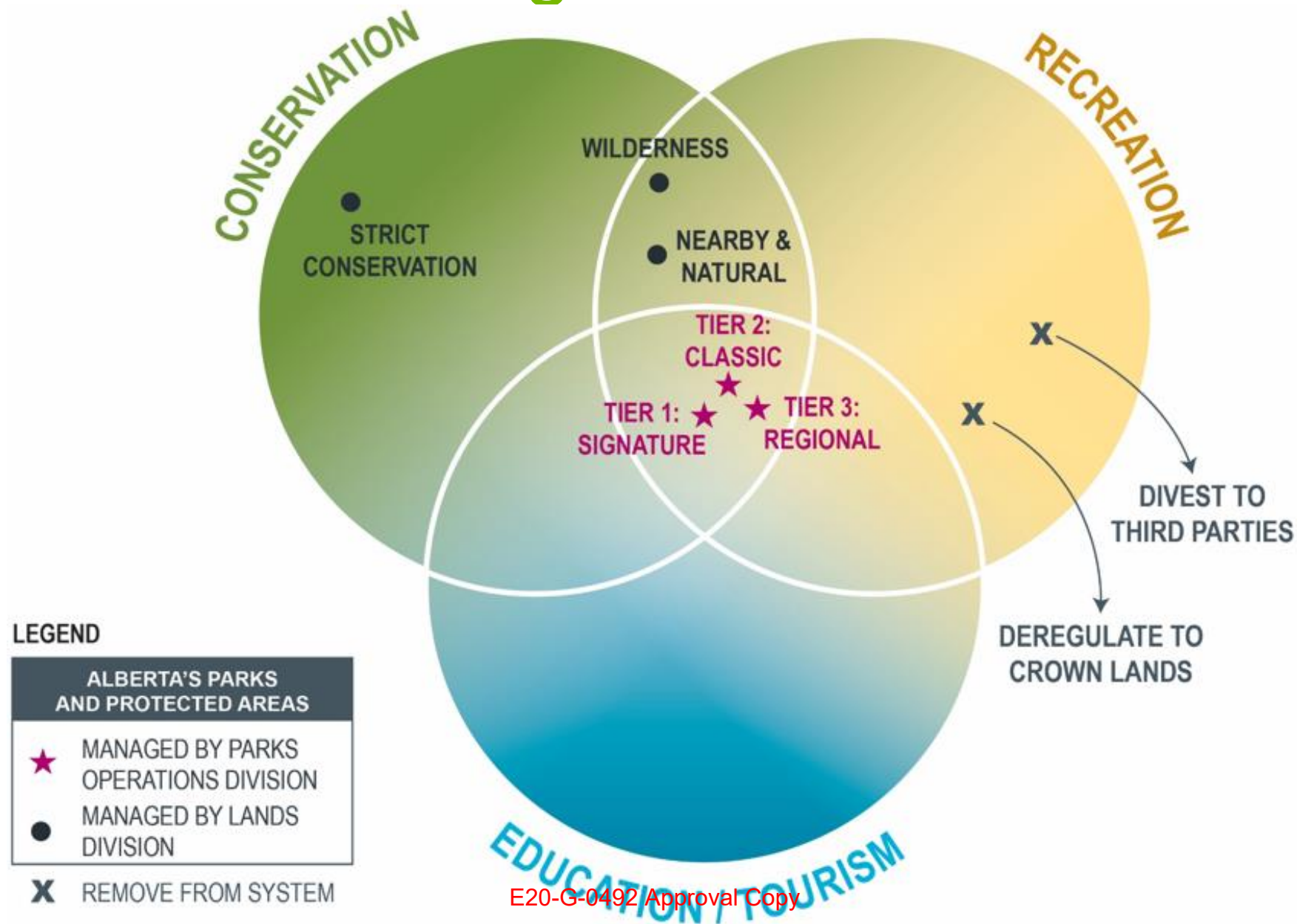
---

- Describes the land component of ‘who we are’ and ‘what we do’.
- Objectives-based; not reliant on existing park classifications.
- Ensures objective assessment and consistent, defensible application of deregulation/divestiture decisions.

# RSAP Categorization Model

E20-G-0492

33



E20-G-0492 Approval Copy

**CONFIDENTIAL –  
Advice to  
Minister**

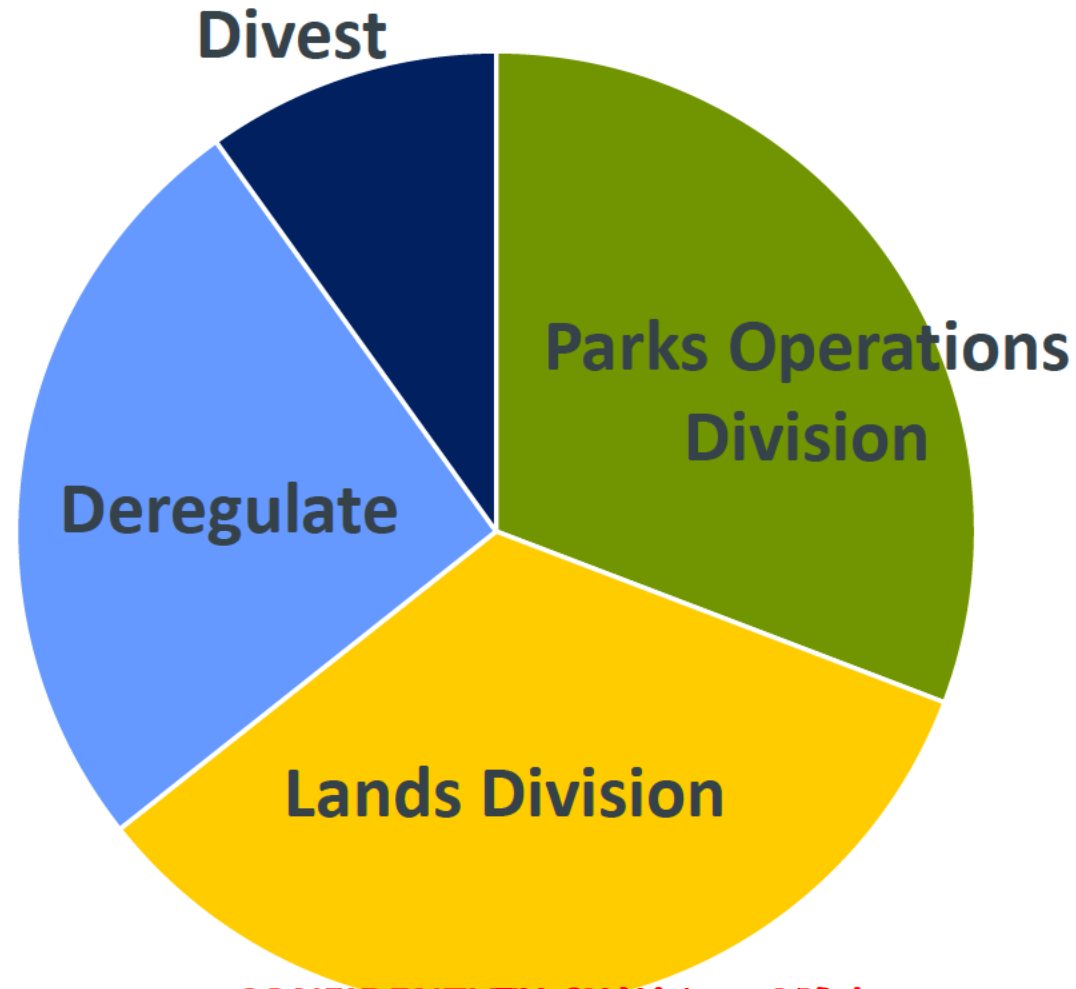
Alberta

# Annex – Optional Slides

---

# Draft Analysis – Number of Sites

---



CONFIDENTIAL – Advice to Minister

# Big Island Provincial Park

---

- Through the application of the framework, BIPP would be categorized as “Divest”
- The process for Big Island with City of Edmonton and Enoch Cree Nation partners could serve as a pilot of how to co-create and co-plan a ‘provincial park’ that would ultimately be managed and operated by an external partner (but as part of the provincial parks and protected areas system)

# Case Studies

---

# Tier 1 Signature Destination: Writing-on-Stone PP

E20-G-0492

38

- UNESCO World Heritage Site
- Major cultural and historic significance to Albertans, especially the Blackfoot
- Very high conservation and recreation values
- Major international tourism draw



# Tier 2 Classic Provincial Park: Miquelon Lake

---

- An Important Bird Area
- Part of the Beaver Hills UNESCO Biosphere and the Dark Sky Preserve
- Important conservation and recreational value
- Regional to Provincial tourism draw



# Tier 3 Regional Park: Aspen Beach PP

---

- Provides camping and access to Gull Lake for water-based recreation
- Accessible to large urban areas
- Very popular provincially



# Strict Conservation: Athabasca Dunes ER

---

- Contains part largest active sand dune system in Alberta
- Some of the largest kames in the world
- Only spot in Alberta where Arctic terns are known to nest
- No/limited recreational use



# Wilderness: Birch Mountains WPP

- Large size with high conservation value
- Ecologically intact and home to several sensitive species
- Backcountry wilderness recreation – mainly lake-based



# Natural & Nearby: Parkland NA

---

- Small pocket of representative landscape
- Primarily conservation value with limited local recreation use and intensity
- Limited infrastructure – staging only



# Past Divestment: Sylvan Lake PP

---

- Divested to Town of Sylvan Lake in 2018.
- Crown provided a \$1.96M one time payment.
- Caveat for public recreation.
- Favourable 10 year cost-benefit analysis
- Public consultation and support.



## Past Divestment: Sun Haven PRA

---

- Divested to the Summer Village of Sunbreaker Cove in 2010.
- Divestment provided greater flexibility for municipality to offer local and regional recreation and tourism opportunities.
- Caveat for public recreation on title.

# Past Divestment: Hommy PRA

---

- Divested to the County of Grande Prairie in March 1985.
- Small site, with campground, playground and ball diamonds.
- No longer aligned with Parks mandate.



# Divestments - other

---

- Hutch Lake PRA (2006 – Mackenzie County)
- Grovedale Fish Pond PRA (2006 – MD of Greenview)
- Tanasiuk PRA (2006 – MD of Opportunity)
- Hoodoos PRA (2009 – Town of Drumheller)
- Horseshoe Canyon PRA (2009 – Kneehill County)
- Holmes Crossing PRA (2009 – Barrhead )
- Groat Creek PRA (2009 – Woodlands County)
- Hanmore Lake PRA (2009 – County of Smoky Lake)

## RSAP Discussion – Northeast Region

Attendance: Luc Nowicki, Glenn Harvey, Shyla Weist

Facilitator: Rae Boisvert

### Overall Concerns:

- What financial savings will there be for the Parks Division by giving over the WPPs when minimal amounts of dollars are spent in these parks?
- Lands Division staff need to be adequately trained or the right people from the Parks Division need to work there in order to adequately manage conservation land bases
- What about the parks assets in the northern WPPs like patrol cabins? Will these cabins be given to the Lands Division to use and maintain?

### Park and Protected Area Categories:

#### Strict Conservation:

##### Crow Lake:

- What is being protected there? What is the significance of the Crow Lake ER?

##### Garner Orchid Fen and La Saline NAs – reclass:

- No concerns with the reclass to ERs

#### Wilderness:

##### Birch River WPP, KN WPP, Kazan WPP:

- These WPPs are remote and not much for trail based recreation, therefore, the recreation classification on the flowchart does not fit these parks well

##### Kazan WPP:

- Need to remove Dore Lake Campground out of the park and put it into a PRA (Regional Park) – currently operated by the Regional Municipality of Wood Buffalo (lease)

##### Richardson:

- There is high trail based recreation and facilities
- Would Lands Division be adequately equipped to manage this land base with the amount of work needed on the facilities?
- Richardson should continue to be a WPP and not a PP because of the legislation implication and the future potential issues with ACFN.
- Numerous unauthorized cabins in the Big Point area that we never dealt with by the Operations Division and disposition staff. Parks currently dealing with it but if they move over to previous disposition holders then the relationship with Fort Chip Metis Local will fall apart.

LA Biche River WPP, Hubert Lake PP, Otter Orloff WPP:

- Look at reclassing these WPPs into Provincial Parks to be considered as Regional Parks to be managed by the Parks Division (not divest)

**Classic Parks:**Crow Lake PP:

- There is potential for growth but this site is probably a regional park
- Probably keep this park in the Parks Operations Division but it would need a lot of work to get more people to go there
- Non-motorized lake – great paddling location and could be advertised for such

Lawrence Lake:

- No expansion room for the campground
- Best to be a regional park and then look at options for divestiture in the future

Halfmoon Lake NA:

- Should be a regional park and look at divesting to the municipality (Thorhild County)
- Only one recreation setting

Poachers Landing PRA:

- Prime operational partnership with Athabasca County or the Poachers Landing Recreation Society
- Potential for the PRA to be added to La Biche River WPP if La Biche River was reclassified to the Provincial Park. However, we would need to look at the oil and gas development if La Biche River was a Provincial Park.

**Regional Parks**Garner Lake:

- Keep as a regional park but look at it financially if it makes sense to divest – a great revenue generator

Maqua Lake:

- Keep as a regional park and continue as an FOA operator

North Buck Lake:

- Currently putting capital dollars into this campground
- Capital investment will create more revenue from the campground and potentially make it a prime partnership with Buffalo Lake Metis to operate or to divest to them completely.

## Divest:

### Engstrom Lake:

- Day use site only
- Potential to deregulate the site completely

### Hangingstone:

- Should be in association with Gregoire Lake PP and Maqua Lake
- Currently run by an FOA
- Needs capital investment into the site and visitation would increase
- Seasonal camping are a potential here

### Franchere Bay:

- Site need to be cleaned up to better reflect the stats – currently at over 190 sites where there is actually close to 150 sites there (messy site locations)
- Option to divest here is strong to the MD of Bonnyville

### Mallaig:

- Options for divesting in limited based on no interest
- Look at deregulating this site

### Wolf Lake:

- Divest to the MD of Bonnyville as they currently operate it under a lease

## Deregulate:

### Chain Lakes:

- There would be a lot of public outcry if this site was closed down
- Should not be shut down and closed but potentially managed by the Lands Division and someone to lease the campground or keep the campground open and managed by the Lands Division
- Past conversations with the Municipality for divest options were unsuccessful

### Kehewin:

- No potential for growth
- There will be public pushback if the campground was closed
- Look at St Paul County of Elk Point for divest options first before deregulating

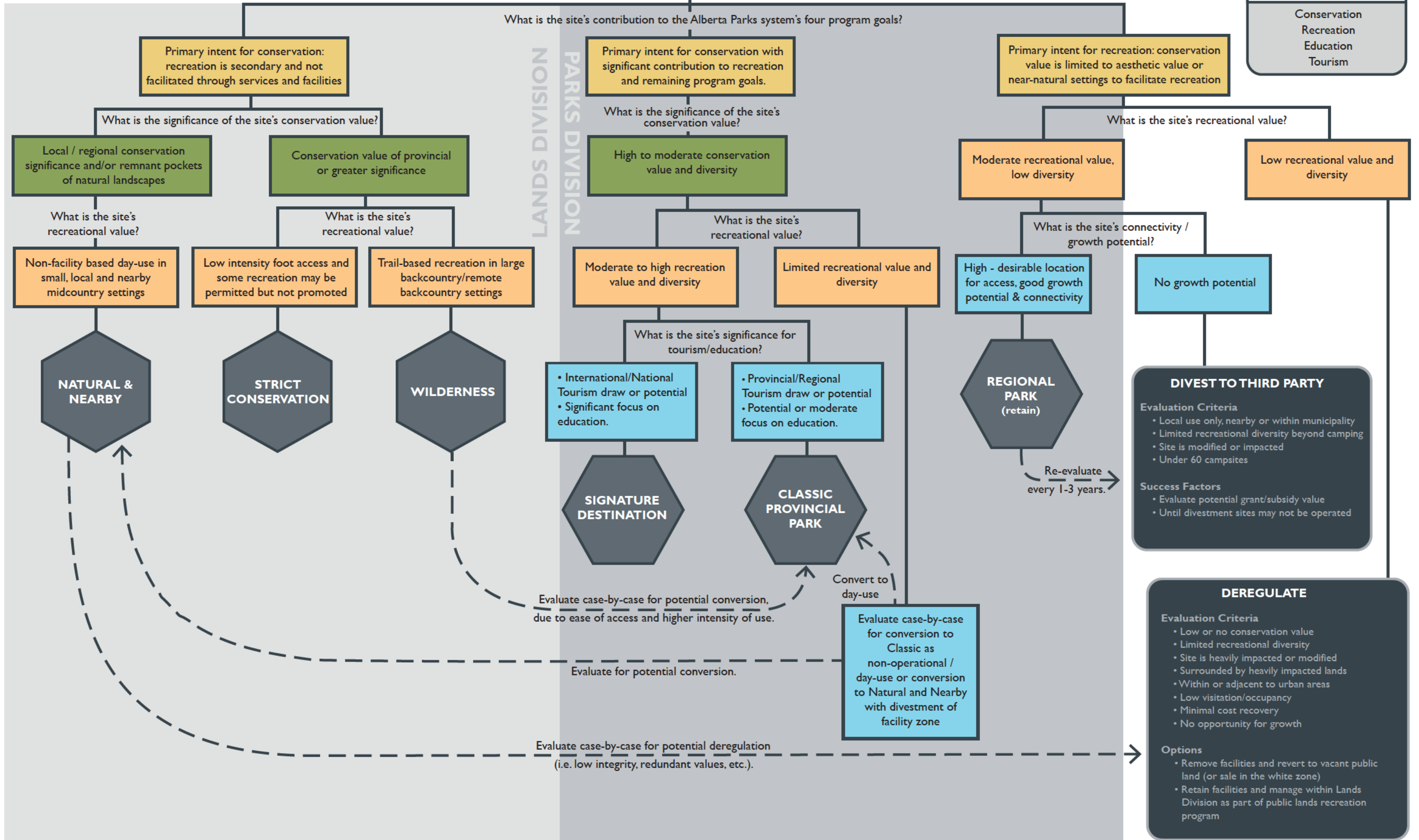
## Close and Deregulate:

- No issues with parks on this list

# Rightsizing Alberta Parks

## Alberta Parks Four Program Goals

Conservation  
Recreation  
Education  
Tourism

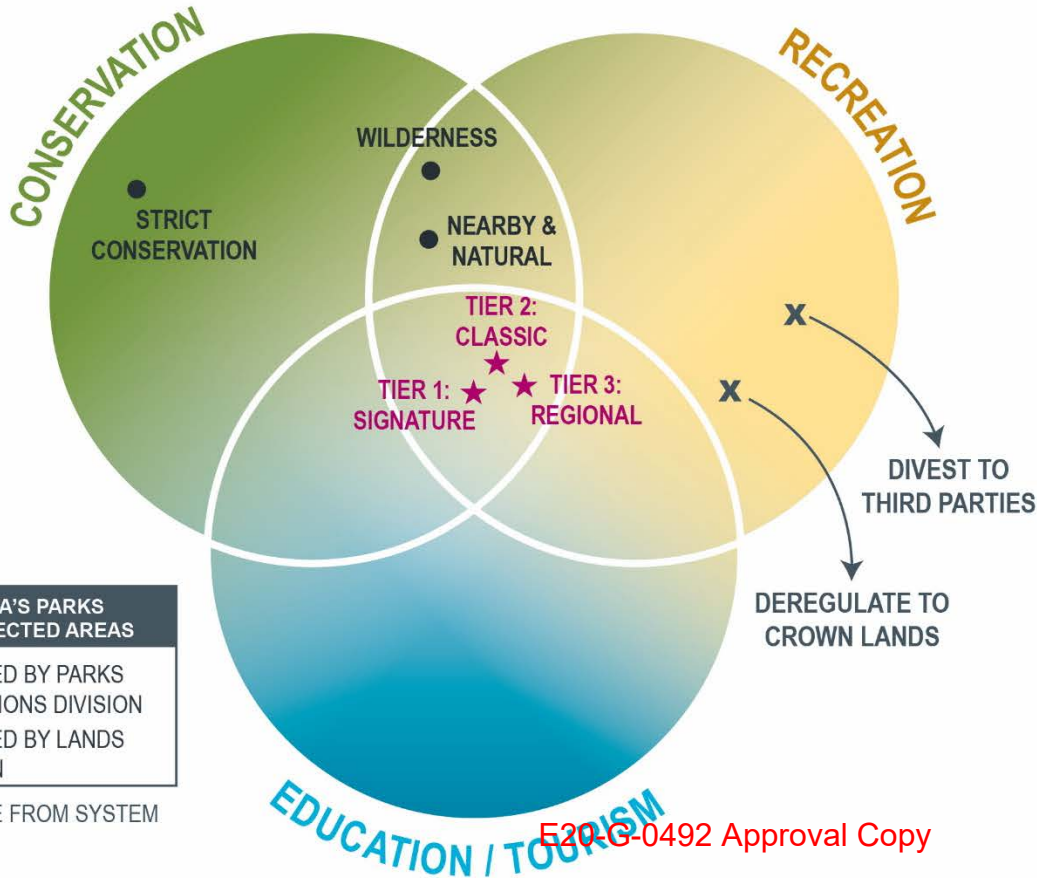


# RSAP: ALBERTA'S PARKS AND PROTECTED AREAS

E20-G-0492

## CONSERVATION

Alberta Parks and Protected Areas are a cornerstone in the matrix of conservation-oriented lands in Alberta. This larger matrix includes public lands, provincial and national designations, as well as both conservation easements and fee simple conservation lands. Together, these lands and tools work together as a connected network of areas achieving conservation outcomes. Protected areas managed by Lands Division have a primary/singular goal for the conservation of nature, while parks managed by Parks Operations Division manage lands for conservation outcomes while providing complementary recreation, education and tourism goals.

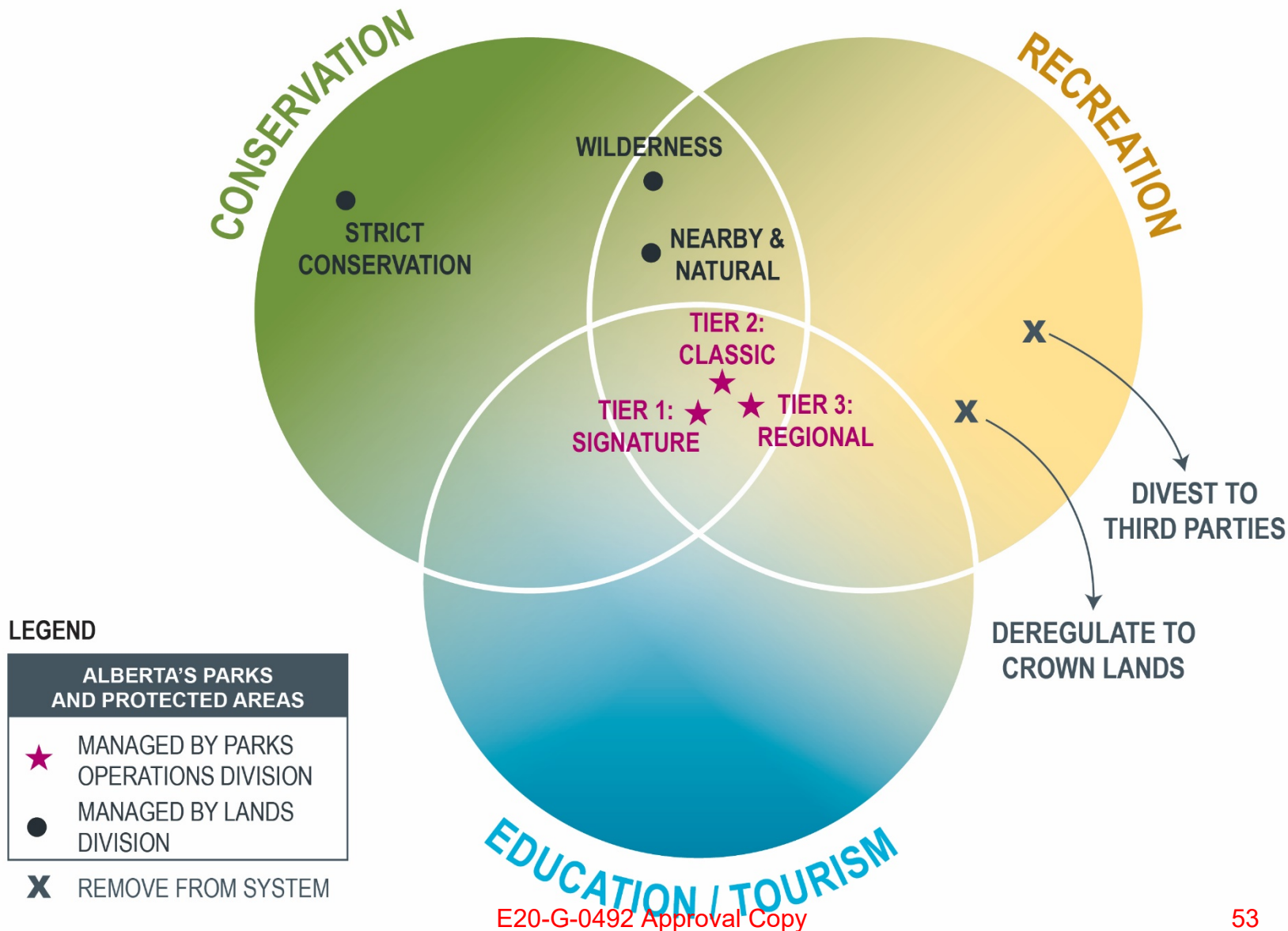


E20-G-0492 Approval Copy

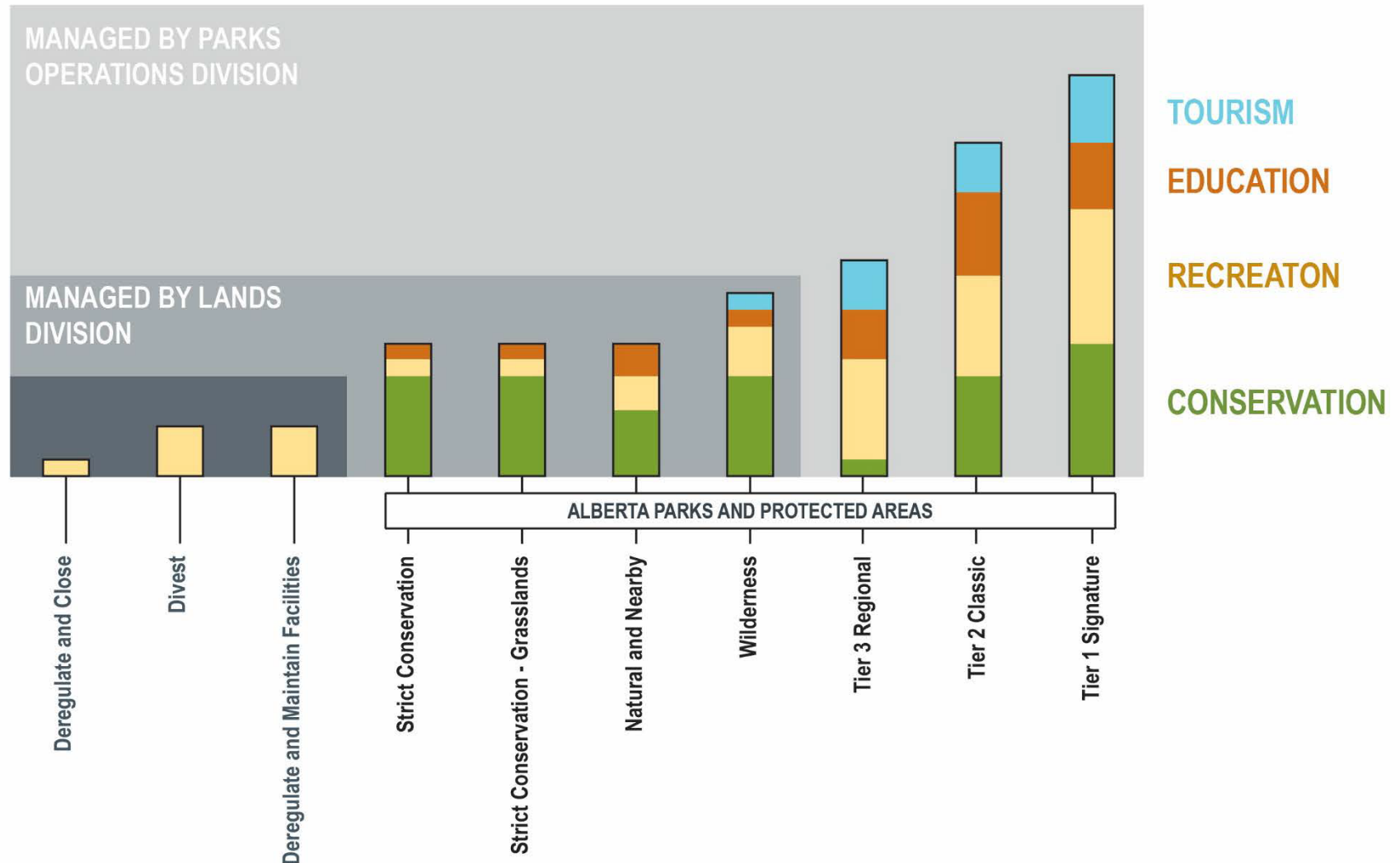
Outdoor recreation occurs across all types of land in Alberta. The focus within Parks Operations Division is on providing for nature-based recreation across a diversity of settings, with facilities and services that enable exceptional visitor experiences. Nature-based recreation is distinct from other forms of outdoor recreation such as sport or facility-based, in that it relies on a participation and connection with the natural world. Protected areas managed by Lands Division also play an important role in recreation, however it is typically of a lower intensity, is non-facility based, and is more closely aligned to the management regime for public lands recreation. Parks with limited nature-based recreation opportunities and diversity are recommended for deregulation or divestiture, where they can be more flexibly managed

## EDUCATION & TOURISM

Core to the mandate for Parks Operations Division is the provision of both formal and informal educational opportunities, as well as enabling opportunities for tourism. This primarily occurs in signature destination and classic parks that have a provincial or even national and international tourism draw, where a wide range of services and facilities, and educational and interpretive programming, can be provided. Other protected areas managed by Lands Division, as well as the range of public and private lands contribute to the tourism economy. Integrated crown land planning will allow tourism opportunities to be more deliberately planned and supported.



# ALBERTA PARKS AND PROTECTED AREAS



Category	Tier 1 Signature Destinations	Tier 2 Classic Provincial Parks	Tier 3 Regional Parks	Divest to Third Party	Deregulate
Contribution to 4 Program Goals	<div><div>☑</div>Conservation - High</div> <div><div>☑</div>Recreation - High</div> <div><div>☑</div>Education - High</div> <div><div>☑</div>Tourism - High</div>	<div><div>☑</div>Conservation - High</div> <div><div>☑</div>Recreation – Medium to High</div> <div><div>☑</div>Education – Medium</div> <div><div>☑</div>Tourism – Medium</div>	<div><div>✕</div>Conservation – Low</div> <div><div>☑</div>Recreation – Medium</div> <div><div>✕</div>Education – Low</div> <div><div>✕</div>Tourism – Low</div>	<div><div>✕</div>Conservation - Low</div> <div><div>☑</div>Recreation – Low to Medium</div> <div><div>✕</div>Education - Low</div> <div><div>✕</div>Tourism - Low</div>	<div><div>✕</div>Conservation - Low</div> <div><div>✕</div>Recreation – Low</div> <div><div>✕</div>Education - Low</div> <div><div>✕</div>Tourism - Low</div>
Proposed Land Manager and Operational Model	<div><div>•</div>Managed by Parks Operations Division.</div> <div><div>•</div>Primarily operated by Parks Operations Division but will still have some areas of outsourcing to third parties via Facility Operating Agreements (FOAs), leases, partnerships or other contract models</div>	<div><div>•</div>Managed by Parks Operations Division</div> <div><div>•</div>Operation may be by Parks Operations Division or third parties via FOAs, leases, partnership or other contract models</div> <div><div>•</div>Regardless of operational model, site remains within larger Alberta Parks Program identity</div>	<div><div>•</div>Most sites with Tier 3 type values are recommended for divestment or deregulation</div> <div><div>•</div>Sites under consideration for retention by Alberta Parks Program could be operated by third parties through FOA, partnership or lease</div>	<div><div>•</div>Recommended for divestment to municipality or other partner and removal from Alberta Parks system</div> <div><div>•</div>May already be under lease or operation by municipality</div>	<div><div>•</div>No longer under Parks legislation.</div> <div><div>•</div>Managed under <i>Lands Act</i> by AEP Lands Division</div> <div><div>•</div>May have facilities removed and revert to vacant public land, or have facilities retained and managed by Lands Division as part of their public lands recreation program</div>
Conservation Criteria	<div><div>•</div>High conservation value and diversity</div> <div><div>•</div>Provincial or greater significance (international designation, ecologically representative or diverse, ESA, management effectiveness ranking)</div> <div><div>•</div>Preserving unique and/or exemplary features and landscape</div> <div><div>•</div>Ecologically intact (naturalness)</div> <div><div>•</div>Non-replicable</div> <div><div>•</div>High cultural or historical significance (HRV 1, 3, 4C, known expression of TLU)</div>	<div><div>•</div>High conservation value (IUCN Cat II or III, ESA of regional or greater significance)</div> <div><div>•</div>Ecologically representative (contributes to 1 or more natural history themes)</div> <div><div>•</div>Provincial or regional significance</div> <div><div>•</div>Ecologically intact (naturalness)</div> <div><div>•</div>Large size (&gt;1000ha)</div>	<div><div>•</div>Conservation value is limited to natural or near-natural settings to facilitate nature-based recreation</div> <div><div>•</div>Sites under consideration for retention by Alberta Parks program have room to grow, in terms of adjacency or connection with other recreation or conservation landbases (potential for enhanced or enduring nature-based recreational opportunities)</div>	<div><div>•</div>Conservation value is limited to natural or near-natural settings to facilitate nature-based recreation</div>	<div><div>•</div>Low or no conservation value; representation is easily replicable and redundant</div> <div><div>•</div>Site is heavily impacted or modified</div> <div><div>•</div>Surrounded by heavily impacted lands; integrity is unlikely to be maintained</div> <div><div>•</div>No opportunity for growth</div>
Recreation Criteria	<div><div>•</div>High recreation value and diversity (&gt;2 settings including frontcountry, 60%+ activity types)</div> <div><div>•</div>Nature-based recreation is central</div> <div><div>•</div>Existing or ability to accommodate a high level of infrastructure (premium LOS)</div>	<div><div>•</div>High recreation value and diversity (&gt;2 settings, 40-60% of activity types)</div> <div><div>•</div>Nature-based recreation is central</div> <div><div>•</div>Supporting infrastructure (premium to standard LOS, 60-85+ campsites)</div> <div><div>•</div>Contains some sites focused on backcountry recreation, where this site is intrinsically linked to an adjacent provincial park, or easy to access, with a higher intensity of use than sites in the wilderness category (Lands). These sites would require a similar need for facility development and services to support recreation.</div>	<div><div>•</div>Moderate to high recreation value (1 or greater setting)</div> <div><div>•</div>Infrastructure to enable recreation</div> <div><div>•</div>Sites under consideration for retention by Alberta Parks program provide a greater diversity of nature-based recreational opportunities beyond camping</div>	<div><div>•</div>Low to moderate recreation value and diversity (1 or greater setting)</div> <div><div>•</div>Infrastructure to enable recreation</div>	<div><div>•</div>Limited recreational diversity beyond camping</div> <div><div>•</div>Limited infrastructure (none, previously removed, or poorly maintained)</div>
Education Criteria	<div><div>•</div>Significant focus on programming (formal education, interpretation or recreation) or ability to accommodate programming in future</div> <div><div>•</div>Personal delivery of programming available primarily through Parks Operations Division staff but may also involve partner organizations</div> <div><div>•</div>Existing education or interpretation infrastructure (interpretive displays, signs, amphitheatres, etc.)</div>	<div><div>•</div>Personal programming mainly available through staff visit once per week and special events</div> <div><div>•</div>Non-personal programming available</div> <div><div>•</div>Mix of delivery through partner organizations and Parks Operations Division staff</div> <div><div>•</div>Moderate to low interpretation infrastructure</div>	<div><div>•</div>Personal programming primarily through periodic staff visit</div> <div><div>•</div>Minimal to no non-personal programming</div> <div><div>•</div>Primarily delivered through partners organizations</div> <div><div>•</div>Minimal to no interpretation infrastructure</div>	<div><div>•</div>Education programming does not need to be aligned with Alberta Parks standards, and can be planned and delivered by third party</div>	<div><div>•</div>Focus on general environmental education and awareness via other AEP Divisions and initiatives</div>

Tourism and Other Criteria	<ul style="list-style-type: none"><li>• High tourism value (provincial, national or greater tourism draw or potential)</li><li>• Auto access</li><li>• High awareness and visitation (website hits, occupancy)</li><li>• Potential connectivity to other services, sites or municipalities</li><li>• Proximity to major urban centre or on-site accommodations</li></ul>	<ul style="list-style-type: none"><li>• Regional to provincial tourism draw</li><li>• Moderate to high use (weekend occupancy 50-75%)</li><li>• Cost recovery of management (60+ campsites)</li><li>• Within 200km radius of major Alberta population centres, with road access</li></ul>	<ul style="list-style-type: none"><li>• Local to regional draw</li><li>• Ease of access</li><li>• Moderate to high use (occupancy 50-75%)</li></ul>	<ul style="list-style-type: none"><li>• Local to regional draw</li><li>• Ease of access</li><li>• Moderate use (50%+ occupancy)</li></ul>	<ul style="list-style-type: none"><li>• Within or adjacent to urban areas</li><li>• Previous FRA or Transportation Waysides</li><li>• Staging areas into adjacent public, municipal or private lands</li><li>• Remote and no operational feasibility</li><li>• Low visitation and tourism value</li><li>• Minimal cost recovery (~20 campsites, low occupancy)</li></ul>
----------------------------	--	---	---	---	--

Category	Wilderness	Strict Conservation	Natural and Nearby
<b>Contribution to 4 Program Goals</b>	<input checked="" type="checkbox"/> Conservation - High <input checked="" type="checkbox"/> Recreation – Medium <input type="checkbox"/> Education - Low <input type="checkbox"/> Tourism – Low	<input checked="" type="checkbox"/> Conservation - High <input type="checkbox"/> Recreation - Low <input type="checkbox"/> Education - High <input type="checkbox"/> Tourism - Low	<input checked="" type="checkbox"/> Conservation – Medium <input checked="" type="checkbox"/> Recreation – Low to Medium <input type="checkbox"/> Education - Low <input type="checkbox"/> Tourism - Low
<b>Proposed Land Manager and Operational Model</b>	<ul style="list-style-type: none"> <li>Managed by Lands Division under <i>Provincial Parks Act</i>, <i>Willmore Wilderness Park Act</i> and <i>WAERNAHRA</i></li> <li>Primarily operated by Lands Division but could have some areas of outsourcing to third parties via Facility Operating Agreements (FOAs), leases, partnerships or other contract models</li> </ul>	<ul style="list-style-type: none"> <li>Managed and operated by Lands Division under <i>Provincial Parks Act</i> and <i>WAERNAHRA</i></li> <li>Grassland Conservation sites are a sub-set of the Strict Conservation category, and are maintained through long-term grazing leases</li> </ul>	<ul style="list-style-type: none"> <li>Managed by Lands Division under <i>WAERNAHRA</i></li> <li>Recommend a program review of Natural Areas: review program goals, operational models, ecological integrity</li> <li>In the interim, deregulations and/or divestitures will be recommended for heavily modified sites and/or replicate reserves</li> </ul>
<b>Conservation Criteria</b>	<ul style="list-style-type: none"> <li>High conservation value</li> <li>Large size (&gt;10,000ha)</li> <li>Ecologically intact</li> <li>Ecologically representative</li> </ul>	<ul style="list-style-type: none"> <li>Single management intent of conservation of nature</li> <li>IUCN Protected Area Category 1A or IV</li> <li>Provincial or greater significant features and/or sensitive landscapes</li> <li>Ecologically intact</li> </ul>	<ul style="list-style-type: none"> <li>Protect small pockets of representative natural landscapes</li> </ul>
<b>Recreation Criteria</b>	<ul style="list-style-type: none"> <li>Recreational setting of primarily remote backcountry; may be some backcountry settings No frontcountry or midcountry settings</li> <li>Nature-based recreation is central</li> <li>Managed for wilderness experiences</li> <li>Supporting infrastructure is limited to staging areas on the periphery, backcountry campsites, trails and remote fly-in lodges</li> </ul>	<ul style="list-style-type: none"> <li>Recreation is tertiary to conservation and land management</li> <li>Foot access only</li> <li>Minimal to no infrastructure</li> <li>For Grassland Conservation sites, access for recreation requires grazing leaseholder permission</li> </ul>	<ul style="list-style-type: none"> <li>Midcountry recreational settings only</li> <li>Non-facility based recreation (trails)</li> <li>Day-use only and infrastructure is limited to staging</li> <li>Provide a nearby natural experience for local communities</li> </ul>
<b>Education Criteria</b>	<ul style="list-style-type: none"> <li>Focus on general environmental education and awareness via other AEP Divisions and initiatives</li> </ul>	<ul style="list-style-type: none"> <li>No on-site programming, but high value for education, science and research</li> <li>Visitor experience is centred on self-guided or self-directed discovery of the unique natural and cultural features protected within the site</li> <li>Experience may be through another site or another means (e.g., online)</li> </ul>	<ul style="list-style-type: none"> <li>May be associated with a volunteer organization or steward group who operates education/interpretation services</li> <li>Visitor experience is typically self-facilitated</li> </ul>
<b>Tourism and Other Criteria</b>	<ul style="list-style-type: none"> <li>Ability to access is difficult (very remote, minimal infrastructure)</li> <li>Experience is largely self-supported; expectation of solitude and limited interactions with other visitors</li> <li>Limited active management or on-site presence</li> </ul>	<ul style="list-style-type: none"> <li>Little to no visitation, no marketing or on-site presence</li> <li>Low accessibility (not facilitated)</li> </ul>	<ul style="list-style-type: none"> <li>Low visitation, limited to local/regional scales</li> <li>No marketing and minimal on-site presence</li> </ul>

# Rightsizing Alberta Parks – Update

ADM Committee

December 11, 2019

**CONFIDENTIAL – Advice to Minister**  
E20-G-0492 Approval Copy

# Reminder – what is RSAP?

---

- What is the problem that RSAP solves?
- Develop framework and evaluate sites to determine:
  - Which sites should be retained by Parks Operations Division?
  - Which sites should be transferred to Lands Division?
  - Which sites should be divested or deregulated?
- Phase 1: Evaluation and Cabinet Report
- Phase 2: Implementation

# Progress Update

---

- Evaluation framework and criteria - complete
- Site analysis, recommendations - complete
- DM meeting – Nov 12
- Scoping consultation options
- Meetings with AEP EDs, Lands Division, Legal, Communications

# Legal Advice and Considerations

---

- Phase 1 does not trigger duty to consult.
- ALSA considerations:
  - Alignment/conflict with regional plans – consultation and plan amendment may be required
  - Was compensation paid for cancelled rights?
- FOAs / dispositions – termination requirements, transfers
- Park closure – issues with Occupier's Liability

# Consultation / Engagement

---

- Options tested with Deputy Minister
- Recommendation to engage in broad, high level consultation/engagement first
- Second phase of consultation would be for site-specific recommendations.

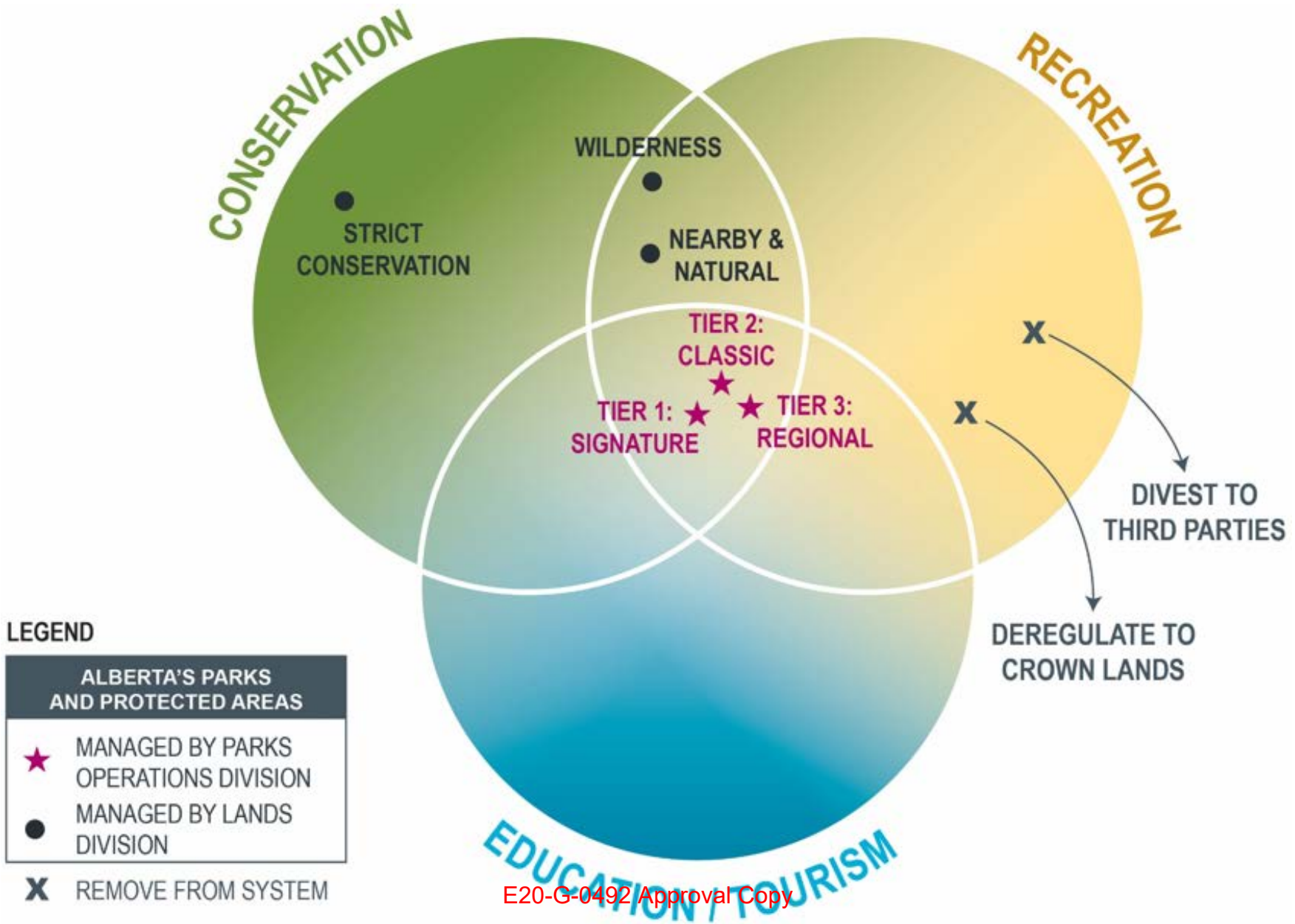
# RSAP Evaluation Framework



# RSAP Evaluation Framework

---

- Describes the land component of ‘who we are’ and ‘what we do’.
- Objectives-based; not reliant on existing park classifications.
- Ensures objective assessment and consistent, defensible application of deregulation/divestiture decisions.



# Lands Division – Categories

---

- Strict Conservation
  - Provincial or greater conservation significance, foot access.
  - Grassland conservation: maintained via long term grazing leases.
- Wilderness
  - Conservation and wilderness recreation in remote settings.
- Natural and Nearby
  - Small, remnant pockets of representative landscapes and locally important day use.

# Parks Operations Division – Categories

---

- Tier 1: Signature Destinations (aka “Crown Jewels”)
  - High value conservation, recreation, education, tourism
  - Exist around a unique or exemplary feature, provincial to international tourism draw
- Tier 2: Classic Provincial Parks
  - 4 program goals, but not rare/unique
  - Tourism draw is regional to provincial
- Tier 3: Regional Parks
  - Recreation in a natural setting
  - Retention factors: recreation diversity and room to grow

# Remove from System: **Divest**

---

- Remove OC and transfer ownership of lands to 3<sup>rd</sup> party for management as park/recreation resource.
- Recommended for sites that have no significant conservation value, but provide important local/regional recreation opportunities.
- Financial assessment needed of grant/subsidy value.

# Remove from System: Deregulate

---

- Remove OC: facilities can be removed, or retained and managed by Public Lands.
- Evaluation criteria:
  - Staging onto adjacent public lands
  - Low or no conservation value
  - Limited recreational value
  - Low visitation/occupancy
  - Minimal cost recovery
  - No opportunity for growth

# Draft Analysis - Summary Table

Category		# of Sites	Total Area
Lands	Tier 1: Signature Destinations	22	444,981 ha
	Tier 2: Classic Provincial Parks	88	604,086 ha
	Tier 3: Regional Parks	41	10,776 ha
	Strict Conservation	42	222,457 ha
	Natural and Nearby	96	17,579 ha
	Wilderness	21	2,574,395 ha
Deregulate / Divest	Divest	36	7,520 ha
	Deregulate and retain/manage facilities	68	4,448 ha
	Deregulate and close (vacant public land)	21	464 ha

# Next Steps

---

- MDM (Dec 18)
- Complete analysis and site recommendations (Jan)
- AEP and cross-government engagement (Jan)
- RFP for 3<sup>rd</sup> party financial analysis (Jan)
- Draft Cabinet Report (Feb)
  - Implementation options and linkages

END



# RIGHTSIZING ALBERTA PARKS

---

Environment and Parks

CONFIDENTIAL – Advice to Cabinet



# Context

---

- The current Alberta Parks system has become overly complex and cumbersome with many redundant sites and parks with limited recreation and/or conservation value.
- Additionally, the amount of land managed by Parks currently exceeds available resources. Budget 2020 will see a reduction of \$5M in operating targets and Budget 2021 an additional \$12M.
- Government has made a platform commitment to modernize environmental legislation for the 21st century and to make prudent fiscal decisions.
- Budget 2020 and the Rightsizing Alberta Parks (RSAP) project allow Alberta to modernize and streamline the parks system towards a more functional, operationally efficient, and affordable model.

## Strategic Discussion for Cabinet

---

### On Budget Day, Alberta will announce:

1. 17 parks that will be non-serviced starting this season.
2. The closure of two visitor information centers in K-Country, Sikome Lake at Fish Creek Provincial Park, no cross country track setting except at the Canmore Nordic Center, and closure of comfort camping at Dinosaur Provincial Park.
3. A shortened camping season (late opening and early closure) at a number of sites across the province.
4. An increase in camping fees (averaging about \$3 per night per campsite) in much of the busier parts of the province.
5. Our intention to propose divesting approximately 45 sites, possibly making them available for partnership opportunities.
6. Our intention to propose deregulating (closing) approximately 119 sites.

# Strategic Considerations

---

- Public and stakeholder groups are expected to be concerned with the reduction of available recreation and camping opportunities, as well as concern about the relative scope and scale of proposed change to the parks system.
- Indigenous groups are expected to express concern about the lack of their early involvement in decisions on land deregulation and divestment, particularly if they feel it will adversely impact traditional land uses, harvesting practices, and/or potential economic opportunities.
- Additionally, First Nations may express concerns about potential impacts to their treaty rights.
- Messaging will need to be clear that these actions will not weaken conservation management of existing sites and that sites recommended for deregulation or divestment do not have significant conservation value.

# Outcomes

---

- Ensuring the outcomes and management intent of the Alberta Parks system are clearly and effectively translated into decision-making.
- Streamlining the parks system to better enable efficient and effective management with a clear focus on the visitor experience.
- Removing unnecessary red tape on lands that no longer meet the intent for which they were established.
- Reducing stakeholder irritants by resolving sites with misaligned activities and park designations.
- Supporting economic development and prosperity by enabling greater flexibility in land uses and decisions on deregulated and divested land.

# Questions?

---



# Right Sizing Alberta's Parks Initiative



# Update: Since December 19 MDM

---

- Completed cross-ministry engagement, and MO Technical Briefing with Communications.
- Developed content to link narrative on:
  - Vision for Crown Lands Transformation; and
  - 10 Year Tourism Strategy.
- Draft Cabinet Report complete – undergoing review prior to submission to MO.
- Work initiated on detailed analysis of specialized facilities, including initiation of work to develop standard levels of service for each retained park tier.

# RSAP Narrative for Cabinet

---

- RSAP provides a suite of benefits: streamlining, reducing red tape, eliminating redundant and non-valuable sites, operational efficiencies
- RSAP also provides opportunities for economic development
  - Third Parties able to direct future of divested/deregulated sites
  - Focusing limited AEP resources on signature sites and other parks with tourism potential

## Discussion question:

- Does Minister support including messaging on RSAP supporting 10 Year Tourism Strategy?

# Question: Announcement Timing

---

- RSAP Cabinet Report has decision point related to desired consultation/engagement approach
- As recommended by MO and communications, recommended option is to not do consultation.
  - Public announcement – release map/list of sites
  - Indigenous consultation as required
- Question about timing of announcement – Summer/Fall 2020, or once implementation steps nearly complete
- Link to B20? Tourism Strategy?

# Potential Misalignment w/ Fishery Program

---

- AEP has engaged the public in enhancing fishing opportunities
- Many provincials parks serve as access points for fishing
- B20 and RSAP decisions could impact AEP's ability to enhance fishing, if parks are closed/divested
  - Even if third party operator is possible, will require time to set up properly
- Magnitude of impact currently unknown, analysis is underway for CR and B20 processes

# Next Steps

---

- CPC package to DMO – February 5
- PCO provides formal review – February 10
- Responsible Resource Development Leadership – February 11
- CPC package to MO – February 12
- MO submits documents to CCU – February 19
- RSD (Policy Committee) – March 4
- Cabinet – March 17
  - If approved, implementation begins April 2020

